

ELECTRICITY MARKET STUDY FOR SOUTH EAST EUROPE JUNE 2007 Edition



With electricity demand projections of 90 GW by 2030, double the current installed capacity, South East Europe will experience significant interest in new plant developments

Pöyry Energy Consulting is pleased to announce the release of the June 2007 edition of the ILEX Energy Report – “Electricity Market Study for South East Europe”.

The report covers an 11-country region comprising of Albania, Bosnia and Herzegovina, Bulgaria, Croatia, Greece, Hungary, Macedonia, Montenegro, Romania, Serbia and Slovenia. Our **European Electricity and Carbon** model **EureCa** is also capable of investigating the links between this region, the rest of Europe and Turkey, and the consequent impact on price levels.

We also present a brief review of the electricity market background of each country, assessment of the various market players and developments in key market sectors.

The update provides our **projections of the fundamental drivers** and describes our modelling methodology used to generate the final electricity prices for the South East Europe market.

Various assumptions for demand growth, fuel and carbon prices, and capacity projections are combined to cover a range of plausible outcomes.

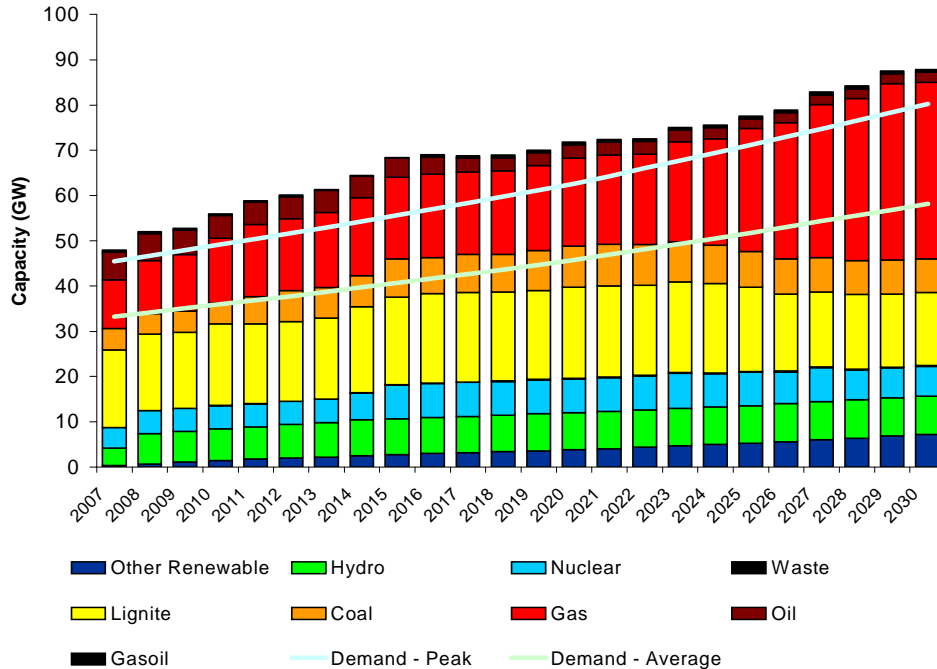
We review current plans for new capacity in the market and examine the drivers behind different types of new build. This analysis is then compared and contrasted with our price projections to obtain a consistent picture of future market entry.

We present three price scenarios and explore the impact of carbon pass through into the electricity price:

- a **High** price scenario examining the effect of high fuel and carbon prices coupled with high demand, capacity growth with a relatively low proportion of the new capacity being from renewables to put a upward pressure on the prices;
- a **Central** scenario characterised by our central (most likely) views on all assumptions; and
- a **Low** price scenario where low demand and capacity growth, low fuel and carbon prices and relatively high proportion of the new capacity being from renewables to put a downward pressure on the prices.

The report is 110 pages in length and contains about ninety figures and tables.

ELECTRICITY MARKET STUDY FOR SOUTH EAST EUROPE



South East Europe – Regional capacity and annual peak demand projections to 2030

As a complementary product, Pöyry can provide complete **arrays of projected half-hourly prices** on a monthly or sample business/non-business day format, out to 2030.

We also offer customisation options such as **plant specific load factors, price duration curves, further sensitivity analysis and bespoke runs using client defined input assumptions.**

Contact Pöyry for more information:

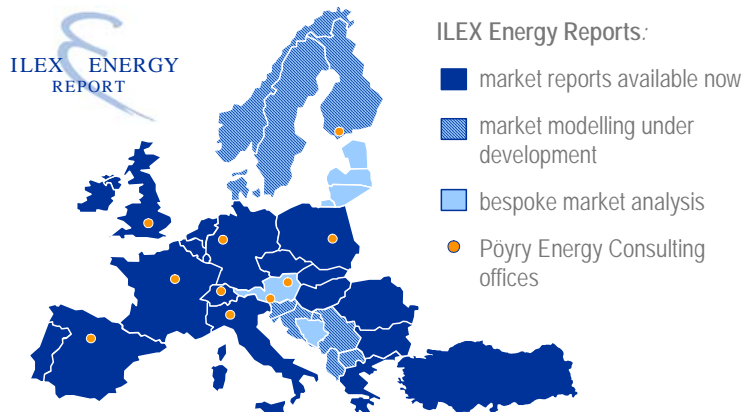
- Andrew Nind
andrew.nind@poyry.com
- Ebru Kurum
ebru.kurum@poyry.com
- Call us on +44 (0)1865 722660 or
- Visit our website at www.illexenergy.com

ILEX Energy Reports

Pöyry Energy Consulting produces ILEX Energy Reports for electricity, gas, carbon and green certificate markets across Europe.

Pöyry Energy Consulting is Europe's leading energy consultancy, providing strategic, commercial, regulatory and policy advice to the energy market.

Our team of over 170 European energy specialists, located across eleven offices and ten countries, offers unparalleled expertise in the rapidly changing energy sector.



Pöyry Energy (Oxford) Ltd.

King Charles House, Park End St, Oxford OX1 1JD, UK
+44(0)1865 722660 consulting.energy.uk@poyry.com

Pöyry Energy Consulting